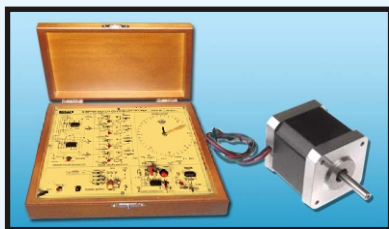


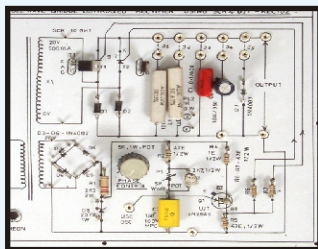


STEPPER MOTOR, SCR MOTOR, SERVO MOTOR TRAINER MODEL - MOTOR100

This trainer has been designed with a view to provide practical and experimental knowledge of stepper motor, SCR motor, servo motor, UJT trigger, circuit breaker, timer and alarm.



Stepper Motor Unit



SCR Motor Unit



Servo Motor Unit

SPECIFICATIONS

1. STEPPER MOTOR UNIT

- MOTOR : Bidirectional with permanent magnet rotor & bifilar wound stator.
MOTOR CHARACTERISTICS : Self starting, low moment of inertia, instantaneous start, stop and reversal of rotation.
ROTATION : 200 Steps / Revolution.
TORQUE : 3.5 kg-cm²
STEPPING ANGLE : 1.8 deg.
PROTECTION : Against forcible stalling.
OPERATING VOLTAGE : 12V DC.
CONNECTOR : Special connector with wires to connect motor unit to translator unit.

2. SCR MOTOR UNIT

- Input : 230V, 50Hz, AC Single Phase
Power Circuit : Using 1 SCR (1200V, 25A) Half Bridge
Based on SCR : BT151
Uses UJT for Speed control
On board 20V DC Supply
12V DC Motor provided

Sigma Trainers and Kits
E-113, Jai Ambe Nagar,
Near Udgam School,
Thaltej,
AHMEDABAD - 380054.
INDIA.

Phone(O): +91-79-26852427/ 26850829
Phone(F): +91-79-26767512/ 26767648
Fax : +91-79-26840290/ 26840290
Mobile : +91-9824001168
Email : sales@sigmatrainers.com
: sigmatrainers@sify.com
Web : www.sigmatrainers.com

Dealer:-

3. SCR MOTOR UNIT

- PRINCIPLE : DC Position Servo System
- DISPLACEMENT : Angular (0 to 270 deg).
- INPUT TRANSDUCER : Command or master potentiometer with calibrated dial (0 to 270 deg)
- Motor : Specially designed bi-directional, geared, permanent magnet armature control led DC motor.
- COUPLING : Suitable coupling of motor to output rebalance potentiometer.
- AMPLIFIERS : Summing amplifier of adjustable gain preamplifier and power amplifier for driving DC on basis of error signal.
- AMPLIFIER GAIN : Controlled by the Voltage signal derived by the conversion of the output position of rebalance potentiometer into voltage signal.
- OUTPUT : Slave dial coupled to the servo mechanism and mounted with calibrated dial.
- CONTROLS : 1. Master or command potentiometer.
2. Potentiometric for zero adjustment.
3. Potentiometric for span adjustment to adjust the minimum and maximum limit
4. Potentiometric for gain adjustment.
5. Servo Motor ON/OFF control.
4. Standard Accessories : 1. A Manual having practical
2. Patch Cords.