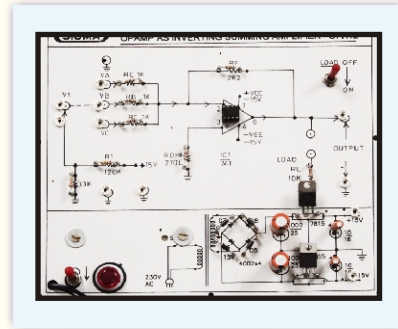




CLAMPING CIRCUIT USING OPAMP

MODEL - OP09

This board has been designed with a view to provide practical and experimental knowledge of Clamping Circuit Using Opamp.



SPECIFICATIONS

1. Built-in Power supply : +15V at 200mA and -15V at 200mA IC Regulated & short circuit protected
2. Power requirement : 230V, 50Hz AC.
3. OP-AMP IC 741 use in Clamping Circuit

4. The complete circuit diagram should be is screen printed on component side of the PCB with circuit and Parts at the same place. The true value of component is printed on component side.

The PCB with components on front side is fitted in elegant wooden box having lock and key arrangement

The acrylic cover is fitted on PCB to safeguard parts. It has holes for alignment and repair.

The testing points are provided with 1.25" tags to connect CRO probe All Trainers are operated on 230V AC mains and must be self-contained unit.

5. Standard Accessories :
 1. A manual having practical details
 2. Patch Cords.

Sigma Trainers and Kits
E-113, Jai Ambe Nagar,
Near Udgam School,
Thaltej,
AHMEDABAD - 380054.
INDIA.

Phone(O): +91-79-26852427/ 26850829
Phone(F): +91-79-26767512/ 26767648
Fax : +91-79-26840290/ 26840290
Mobile : +91-9824001168
Email : sales@sigmatrainers.com
: sigmatrainers@sify.com
Web : www.sigmatrainers.com

Dealer:-